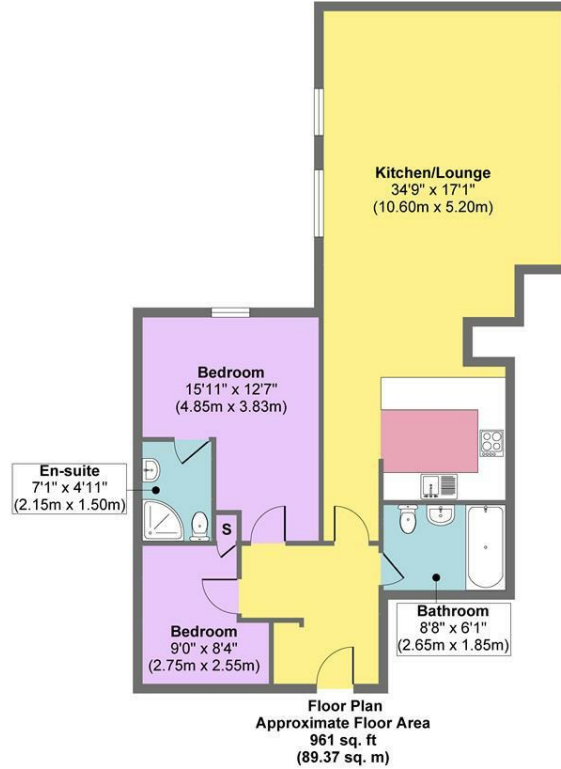




Apt 26, Ladybower Lodge Ashopton Road, Hope Valley S33 0BY £925 Per Calendar Month

Available to let is this superb luxury two double bedroom apartment forming part of this historic property, which was originally the Old Pump House for Ladybower Dam. Beautifully presented throughout with electric heating, secure parking and full use of on-site gymnasium. Occupying an impressive setting overlooking Ladybower reservoir on the edge of the highly sought after Peak Park village of Bamford, surrounded by stunning Derbyshire countryside close to local walks and cycle trails, country inn and amenities. The spacious accommodation comprises: Entrance hall, master bedroom with en suite shower room, bedroom two, bathroom, recently installed fitted kitchen with a range of built in appliances opening through to a very large open plan lounge and dining room with great views. Outside: extensive communal grounds. Secure gated parking. UNFURNISHED, 6-12 MONTH TENANCY. Restrictions: No smokers or pets. Energy Efficiency Rating B. Council Tax Band D

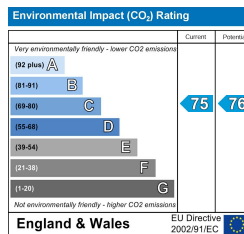
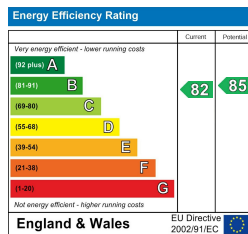
26 Ladybower Lodge



Approx. Gross Internal Floor Area 961 sq. ft / 89.37 sq. m

Illustration for identification purposes only, measurements are approximate, not to scale.

Produced by Elements Property



Banner Cross
Hathersage
Bakewell
Matlock
www.saxtonmee.co.uk

949-951 Ecclesall Road, Sheffield S11 8TN
3 Bank View, Main Road, Hathersage S32 1BB
Matlock Street, Bakewell DE45 1EE
27 Causeway Lane, Matlock, DE4 3AR

T: 0114 268 3241
T: 01433 650009
T: 01629 815307
T: 01629 828250

E: bannercross@saxtonmee.co.uk
E: hathersage@saxtonmee.co.uk
E: bakewell@saxtonmee.co.uk
E: matlock@saxtonmee.co.uk